



FASTFLO LID

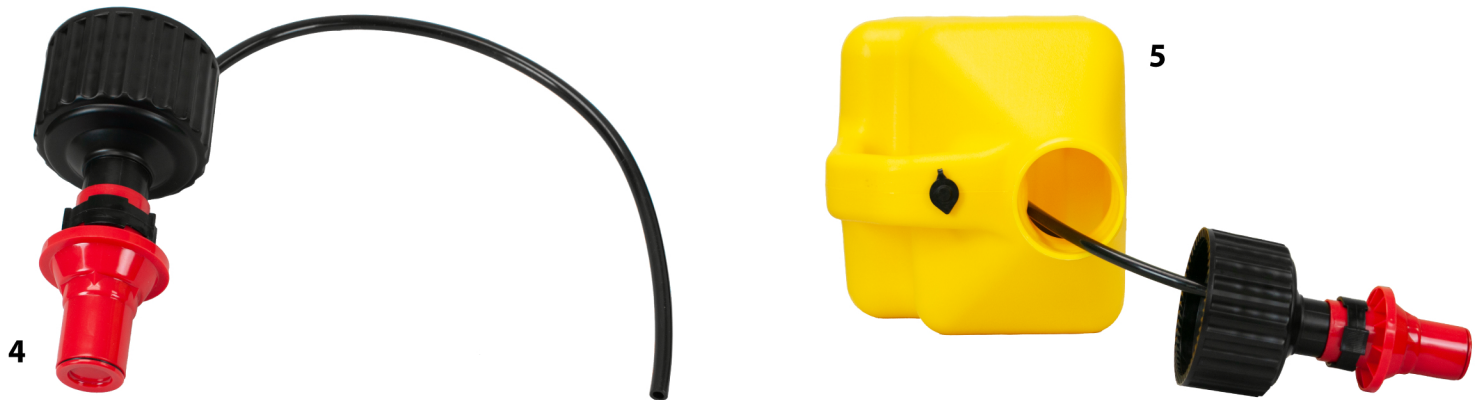


P.O. Box 313
Bennington, NE 68007
316-928-7615
www.RaceJugs.com

FastFlo Lid Assembly Instructions



1. Locate vent port inside of the FastFlo Lid.
2. Firmly insert provided hose into FastFlo Lid vent port.
3. You should see the hose end when FastFlo Lid is in the open position.
4. Your FastFlo lid is now completely assembled.
5. Insert the hose into the neck of your RaceJug and tighten the Fastflo Lid until tight.



6. The FastFlo Lid is self venting. **DO NOT OPEN** the vent on the RaceJug.
7. The FastFlo Vehicle Tank Adapter (Optional) snaps into place onto the FastFlo Lid Spout.

